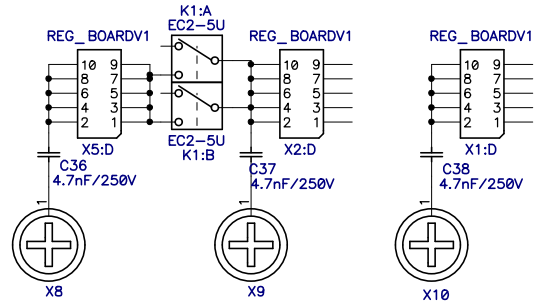
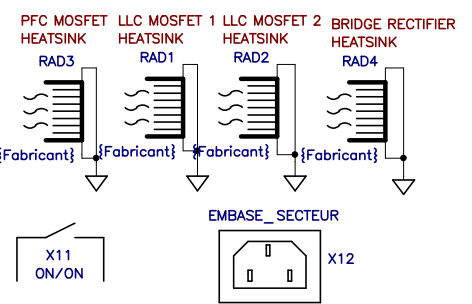
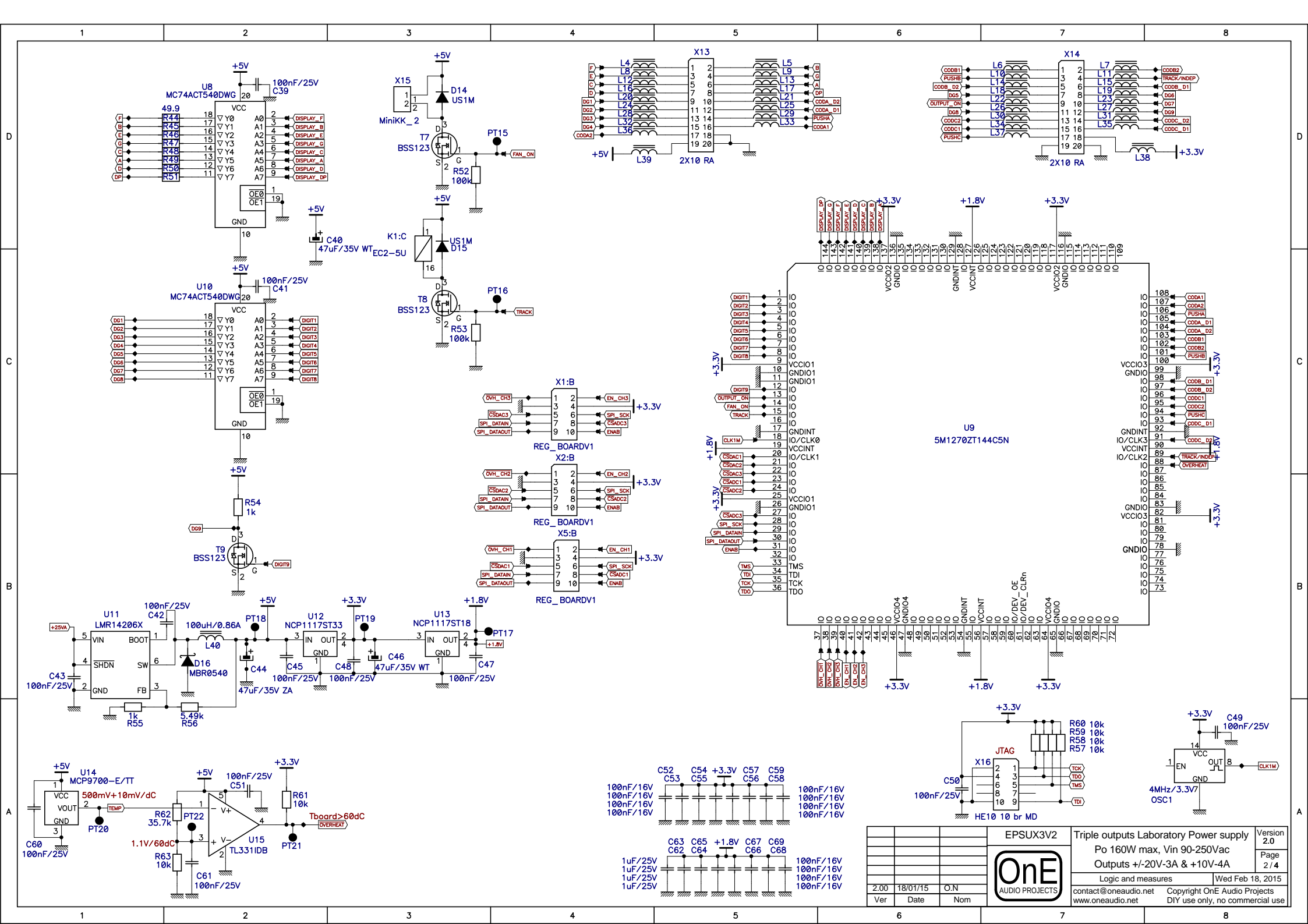


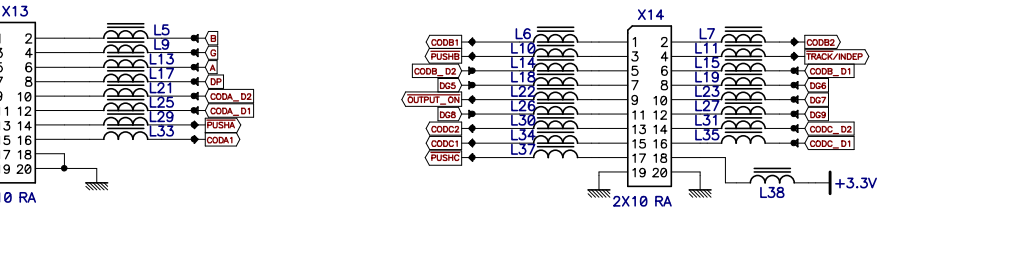
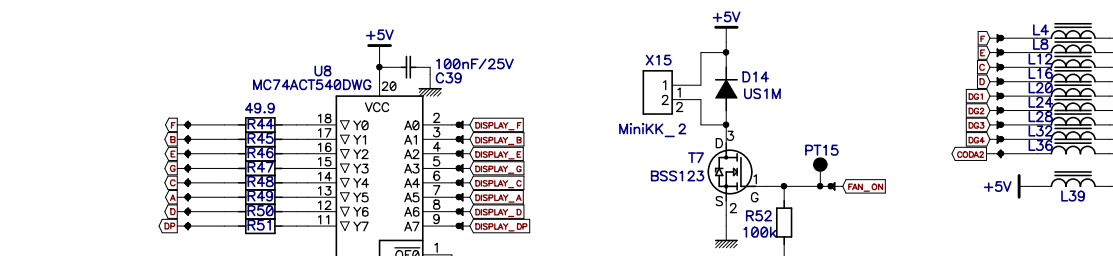
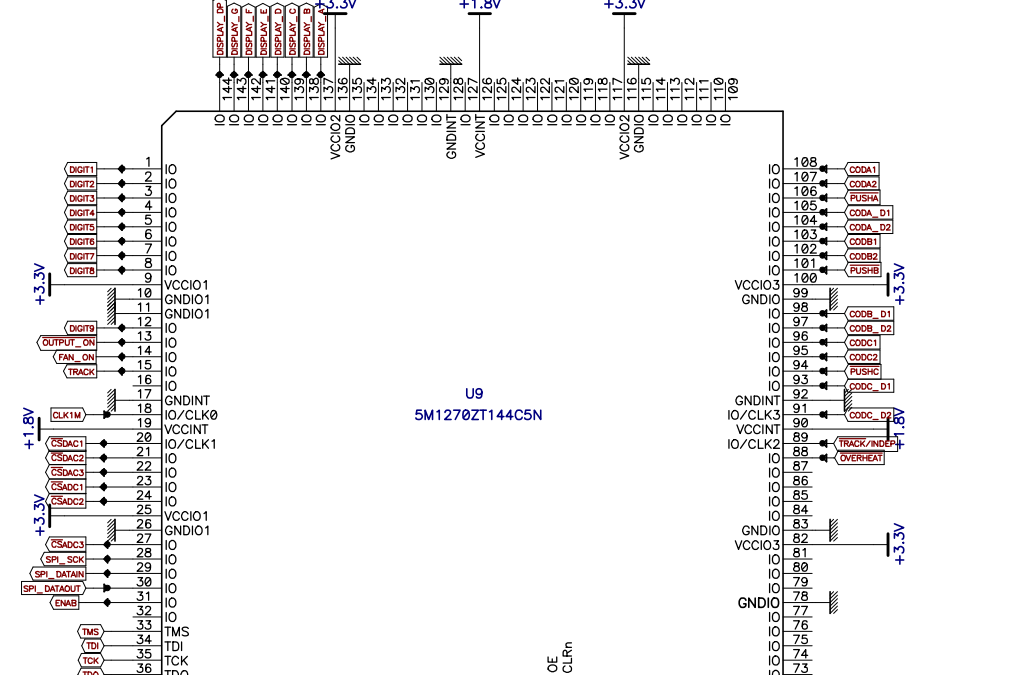
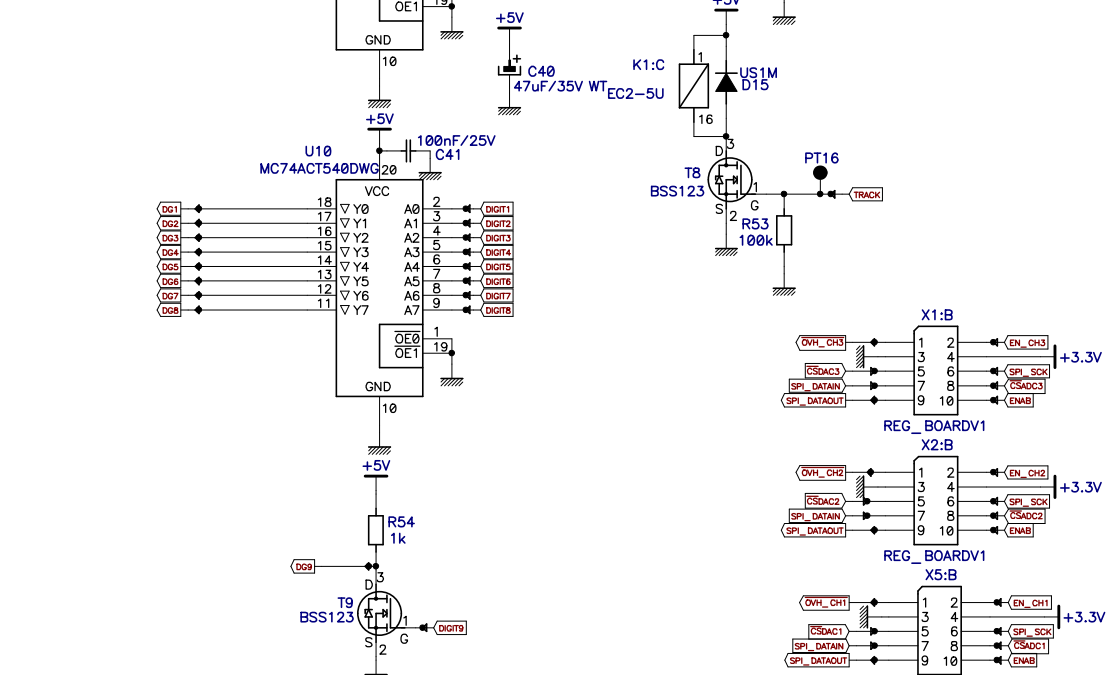
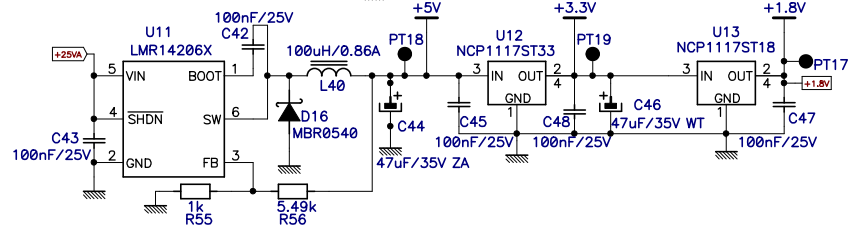
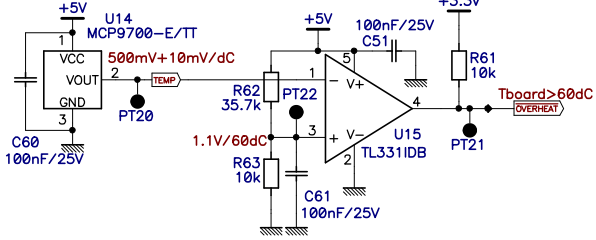
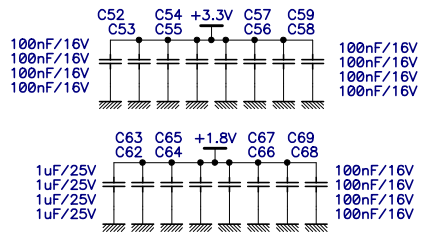
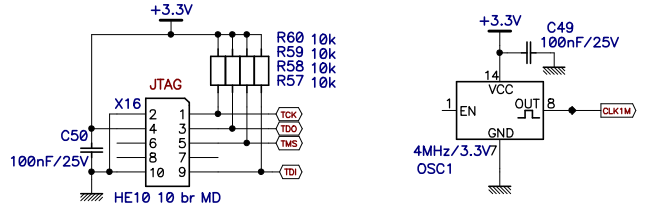
▲ = COOLING REQUIRED



|      |  |  |            |  |  |  |                                 |
|------|--|--|------------|--|--|--|---------------------------------|
|      |  |  | EPSUX3V2   |  | Triple outputs Laboratory Power supply |  | Version 2.0                     |
|      |  |  | <b>OnE</b> |  | Po 160W max, Vin 90-250Vac             |  | Page 1 / 4                      |
|      |  |  |            |  | Outputs +/-20V-3A & +10V-4A            |  |                                 |
|      |  |  |            |  | Flyback SMPS                           |  | Wed Feb 18, 2015                |
| 2.00 |  |  | 18/01/15   |  | O.N                                    |  |                                 |
| Ver  |  |  | Date       |  | Nom                                    |  |                                 |
|      |  |  |            |  | contact@oneaudio.net                   |  | Copyright OnE Audio Projects    |
|      |  |  |            |  | www.oneaudio.net                       |  | DIY use only, no commercial use |



|                            |          |     |  |  |             |
|----------------------------|----------|-----|--|--|-------------|
| EPSUX3V2                   |          |     | Triple outputs Laboratory Power supply |  | Version 2.0 |
| Po 160W max, Vin 90-250Vac |          |     | Outputs +/-20V-3A & +10V-4A            |  | Page 2 / 4  |
| Logic and measures         |          |     | Wed Feb 18, 2015                       |  |             |
| contact@oneaudio.net       |          |     | Copyright OnE Audio Projects           |  |             |
| www.oneaudio.net           |          |     | DIY use only, no commercial use        |  |             |
| Ver                        | Date     | Nom |  |  |             |
| 2.00                       | 18/01/15 | O.N |  |  |             |



1 2 3 4 5 6 7 8

1 2 3 4 5 6 7 8

1 2 3 4 5 6 7 8

D

D

C

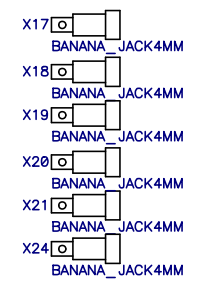
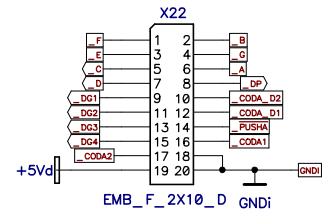
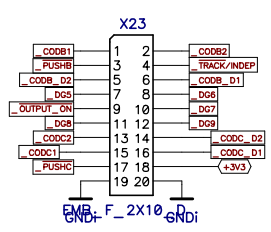
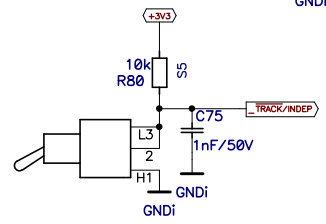
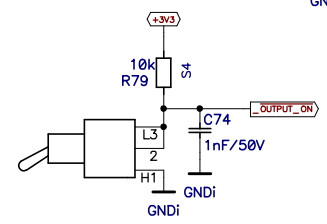
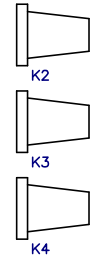
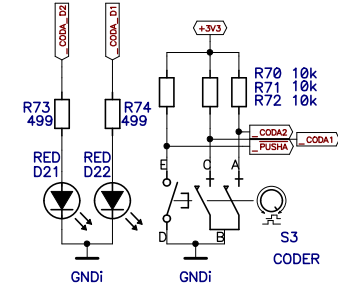
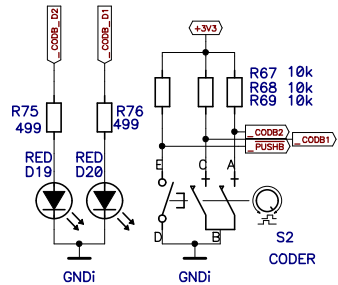
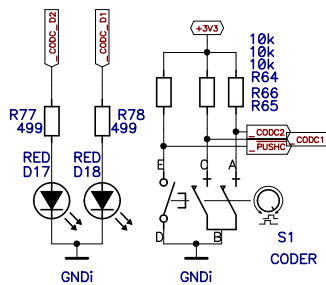
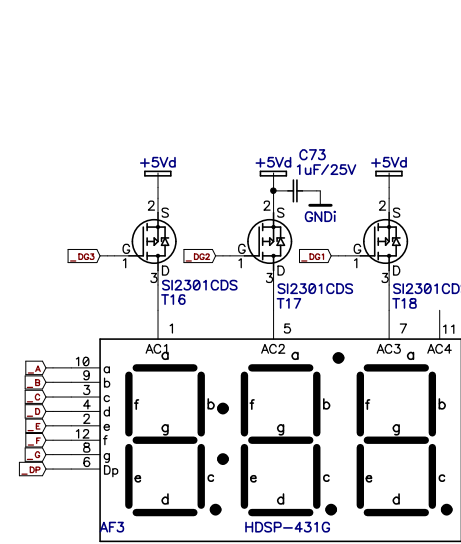
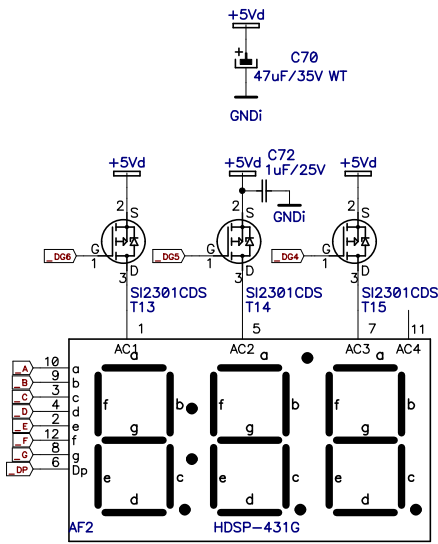
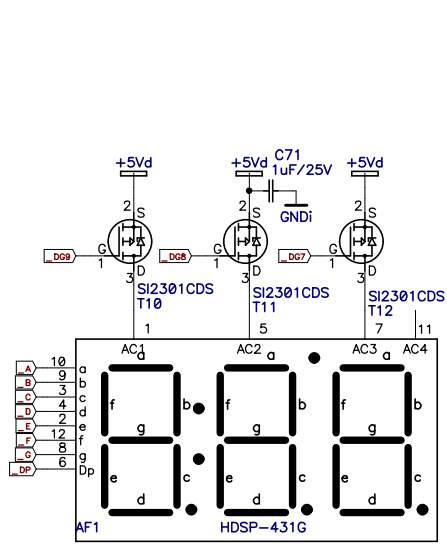
C

B

B

A

A



|  |  |  |                              |  |   |  |                                 |  |
|--|--|--|------------------------------|--|---|--|---------------------------------|--|
|  |  |  | <b>EPSUX3V2</b>              |  | Triple outputs Laboratory Power supply            |  | Version 2.0                     |  |
|  |  |  | <b>OnE</b><br>AUDIO PROJECTS |  | Po 160W max, Vin 90-250Vac                        |  | Page 3 / 4                      |  |
|  |  |  |                              |  | Outputs +/-20V-3A & +10V-4A                       |  | Front panel Wed Feb 18, 2015    |  |
|  |  |  |                              |  | contact@oneaudio.net Copyright OnE Audio Projects |  | DIY use only, no commercial use |  |
|  |  |  |                              |  | 2.00 18/01/15 O.N                                 |  |                                 |  |
|  |  |  |                              |  | Ver Date Nom                                      |  |                                 |  |